



8050L Pneumatically Operated Deadlatch



Locking Systems

For More information please call 210-123-4567



Locking Systems

8050L Pneumatically Operated Deadlatch



The 8050L Locking System offers complete selective electric operation of sliding doors in a line or group from a remote control station. Doors are operated by pneumatic cylinders over each door. This system also provides emergency pneumatic unlocking from a remote location. Doors are locked at top and bottom in both the open and closed positions by means of a concealed vertical lock bar at the rear jamb of each door. The vertical lock bar is deadlocked at a third locking point inside the horizontal cover box above the door. Standard clear door opening widths are from 2'4" to 3'2".

FUNCTION

ELECTRIC - A remote switch activates pneumatic cylinders which raise a vertical lock bar and propel

the door open or closed. Individual lamp indicators on the control panel show locked/unlocked condition. A single switch can provide group unlocking.

MECHANICAL - In the absence of pneumatic or electrical power, doors may be individually unlocked with a manual release tool. Door movement is by hand and door will relock in either fully open or closed position.

EMERGENCY GANG RELEASE - In an emergency, all doors in a cell line may be simultaneously unlocked from a remote location using a pneumatic release system. While in emergency release mode, doors will not relock in any position.

STANDARD FEATURES

- Bottom door guide
- Door hanger
- Pneumatic emergency release
- Sloped-front cover box
- Hinged cover panel for maintenance access
- Vertical lock bar assembly
- ASTM F1643 Certified Horizontal and Vertical Impact Test-Grade 1
- Prime paint finish

OPTIONAL FEATURES

PILASTER RELEASE – (In lieu of pneumatic release system.) Hip-high paracentric keyed mechanical release mounted in a full-height pilaster adjacent to the receiving jamb. Specify "8050LP-1" keyed one side.

ELECTRIC KEYSWITCH – Paracentric or mogul keyed local electric control switch mounted below mechanical release mechanism in pilaster. Specify "8050LPK-1" for paracentric keyed one side. Specify "8050LPKM-1" for mogul keyed one side.

HOT DIP GALVANIZED FINISH - Available for external applications with lift-off cover panel only. Not available with standard hinged cover panel. Specify "G" when ordering. Example: 8050LP-1G

FACTORY-WIRED CONTROL CABLE
Specify "8050LWC."



For More information please call 210-123-4567

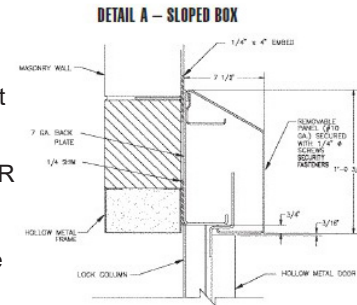
Locking Systems

8050L Pneumatically Operated Deadlatch

DOOR SCHEDULE				
Door Height	Clear Opening	Frame Opening	Cover Box	Door Width
	3' - 0"	3' - 7"	7' - 4"	3' - 2 1/2"
	3' - 2"	3' - 9"	7' - 8"	3' - 4 1/2"
	3' - 4"	3' - 11"	8' - 0"	3' - 6 1/2"
	3' - 6"	4' - 1"	8' - 4"	3' - 8 1/2"
	3' - 8"	4' - 3"	8' - 8"	3' - 10 1/2"
	4' - 0"	4' - 7"	9' - 4"	4' - 2 1/2"
	4' - 4"	4' - 11"	10' - 0"	4' - 6 1/2"
	4' - 6"	5' - 1"	10' - 4"	4' - 8 1/2"

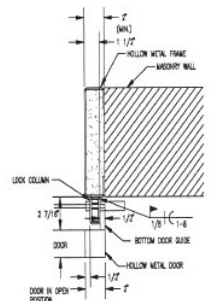
NOTE: Cover box minimum length = (7" overtravel) + (2 x clear opening) + 9". For doors exceeding 300 lbs. and/or greater than 3'-2" clear opening, contact factory.

THREE HOUR FIRE DOOR RATING AVAILABLE. Standard cover box calculation does not apply to fire rated doors.

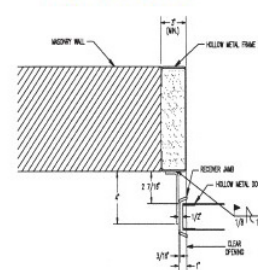


COVER BOX SECTION
7-1/2" deep x 1'-0-3/4" tall cover box field welded 1" on 6" top and bottom

DETAIL B - VERTICAL LOCK JAMB BAR

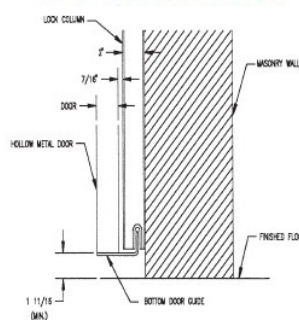


DETAIL C - RECEIVER

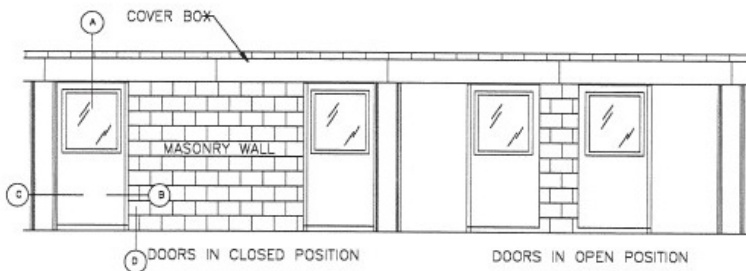


RECEIVER JAMB SECTION
Flush receiver jamb allows frame opening and clear opening to be the same.

DETAIL D - BOTTOM DOOR GUIDE SECTION



8050L PNEUMATIC SLIDING DOOR SYSTEM



TECHNICAL DATA

Cover Box	1' 0 - 3/4' H x 7 - 1/2' D
Cover Box Material	7 gauge steel plate
Hinged Panel	10 gauge steel
Door Rollers	3" diameter, machined steel with sealed bearings.
Lock Size	5/8" H x 1-1/2" W x 1-3/4" D
Lock Weight	3.2 lbs
Latchbolt Size	1-5/8" H x 5/8" TK
Air Requirements	Air consumption 44 cubic inches per operation. Supply pressure: 80 - 100 P.S.I. at the
Builder's Cylinder	1-5/32" diameter with standard Yale cam or equal

UL Listed for use on three-hour fire doors.
ASTM F 1577 Certified Impact Test-Grade 1.

For More information please call 210-123-4567

